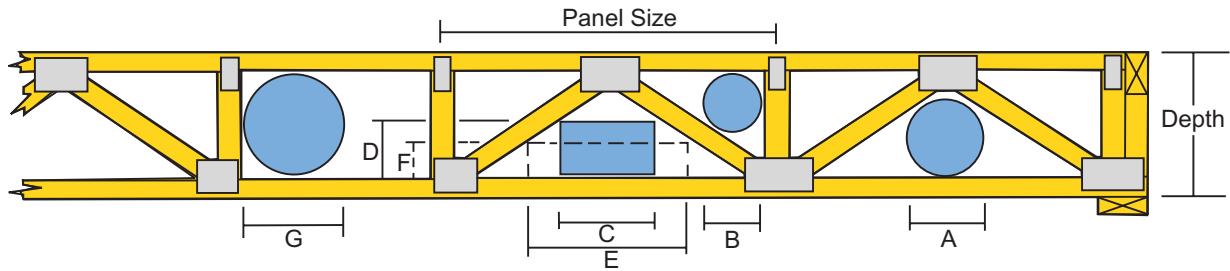


## Duct Openings For Fan Style Floor Trusses With 4x2 or 3x2 Chords & Webs



### Typical Duct Opening Sizes For 4x2 Fan Style Floor Trusses

Depth	Panel Size	A	B	C	D	E	F	G
10	60	4 <sup>1</sup> / <sub>2</sub>	4 <sup>1</sup> / <sub>4</sub>	11	4 <sup>1</sup> / <sub>2</sub>	16	4	7
11	60	5 <sup>1</sup> / <sub>4</sub>	5 <sup>1</sup> / <sub>4</sub>	12	5 <sup>1</sup> / <sub>2</sub>	15	5	8
11 <sup>7</sup> / <sub>8</sub>	60	7 <sup>3</sup> / <sub>4</sub>	6 <sup>3</sup> / <sub>4</sub>	10	6 <sup>1</sup> / <sub>4</sub>	14	5 <sup>1</sup> / <sub>2</sub>	8 <sup>3</sup> / <sub>4</sub>
12	60	6 <sup>1</sup> / <sub>4</sub>	6 <sup>1</sup> / <sub>4</sub>	14	6	20	5	9
13	60	7 <sup>1</sup> / <sub>4</sub>	7 <sup>1</sup> / <sub>4</sub>	12	7	18 <sup>1</sup> / <sub>2</sub>	6	10
14	60	8 <sup>1</sup> / <sub>4</sub>	8 <sup>1</sup> / <sub>4</sub>	17	7	22	6	11
15	60	9 <sup>1</sup> / <sub>4</sub>	8 <sup>1</sup> / <sub>2</sub>	15	8	25	6	12
16	60	10 <sup>1</sup> / <sub>4</sub>	9 <sup>1</sup> / <sub>2</sub>	14	9	27	6	13
18	60	12 <sup>1</sup> / <sub>4</sub>	10 <sup>1</sup> / <sub>2</sub>	14 <sup>1</sup> / <sub>2</sub>	10 <sup>1</sup> / <sub>2</sub>	26	7	15
20	60	14	11 <sup>1</sup> / <sub>2</sub>	14 <sup>1</sup> / <sub>2</sub>	12	26	8	17
22	60	16	12 <sup>1</sup> / <sub>2</sub>	15	13	30	8	19
24	60	18	13 <sup>1</sup> / <sub>2</sub>	16	14	32	8	21
26	60	19	14 <sup>1</sup> / <sub>2</sub>	18	15	34	8	23
30	60	22	16	20	17	32	10	24
36	60	25	17 <sup>1</sup> / <sub>2</sub>	22	19 <sup>1</sup> / <sub>2</sub>	36	10	24

All Dimensions In Inches

### Typical Duct Opening Sizes For 3x2 Fan Style Floor Trusses

Depth	Panel Size	A	B	C	D	E	F	G
9 <sup>1</sup> / <sub>2</sub>	36	5 <sup>1</sup> / <sub>2</sub>	4 <sup>1</sup> / <sub>2</sub>	8	3 <sup>1</sup> / <sub>2</sub>	10	3	6 <sup>1</sup> / <sub>2</sub>
11 <sup>7</sup> / <sub>8</sub>	60	7 <sup>3</sup> / <sub>4</sub>	6 <sup>3</sup> / <sub>4</sub>	10	6 <sup>1</sup> / <sub>4</sub>	14	5 <sup>1</sup> / <sub>2</sub>	8 <sup>3</sup> / <sub>4</sub>
11 <sup>7</sup> / <sub>8</sub>	54	7 <sup>3</sup> / <sub>4</sub>	6 <sup>1</sup> / <sub>2</sub>	10	6 <sup>1</sup> / <sub>4</sub>	14	5 <sup>1</sup> / <sub>2</sub>	8 <sup>3</sup> / <sub>4</sub>
12	54	7 <sup>3</sup> / <sub>4</sub>	6 <sup>3</sup> / <sub>4</sub>	10	6 <sup>1</sup> / <sub>2</sub>	14	5 <sup>3</sup> / <sub>4</sub>	9
13	54	8 <sup>3</sup> / <sub>4</sub>	7 <sup>1</sup> / <sub>2</sub>	12	7	16	6	10
14	54	9 <sup>3</sup> / <sub>4</sub>	8	13	7 <sup>1</sup> / <sub>4</sub>	16	6 <sup>3</sup> / <sub>4</sub>	11
15	54	10 <sup>1</sup> / <sub>2</sub>	8 <sup>1</sup> / <sub>2</sub>	14	7 <sup>3</sup> / <sub>4</sub>	17	7 <sup>1</sup> / <sub>4</sub>	12
16	54	11 <sup>1</sup> / <sub>2</sub>	9 <sup>1</sup> / <sub>4</sub>	15	8 <sup>1</sup> / <sub>4</sub>	18	7 <sup>3</sup> / <sub>4</sub>	13
18	54	13	10 <sup>1</sup> / <sub>4</sub>	16	9 <sup>1</sup> / <sub>2</sub>	20	8 <sup>1</sup> / <sub>4</sub>	15
20	54	14 <sup>1</sup> / <sub>2</sub>	11 <sup>1</sup> / <sub>4</sub>	17	10 <sup>1</sup> / <sub>2</sub>	22	8 <sup>1</sup> / <sub>2</sub>	17
22	54	16	12	18	11	24	9	19
24	54	17 <sup>1</sup> / <sub>2</sub>	13	20	12	26	9 <sup>1</sup> / <sub>2</sub>	21

All Dimensions In Inches

Maximum duct dimensions are based on a truss plate width of 4 inches. Larger plate widths may cause a reduction in duct sizes. Chase sizes are maximum possible for centered openings.